

**FLOT2 Antibody (C-Term)**  
**Purified Rabbit Polyclonal Antibody (Pab)**  
**Catalog # AP22149b****Specification**

---

**FLOT2 Antibody (C-Term) - Product Information**

Application	WB,E
Primary Accession	<a href="#">Q14254</a>
Other Accession	<a href="#">A6QLR4</a> , <a href="#">Q60634</a> , <a href="#">Q9Z2S9</a>
Reactivity	Human, Mouse
Predicted	Bovine, Rat
Host	Rabbit
Clonality	polyclonal
Isotype	Rabbit IgG
Calculated MW	47064

**FLOT2 Antibody (C-Term) - Additional Information****Gene ID** 2319**Other Names**

Flotillin-2, Epidermal surface antigen, ESA, Membrane component chromosome 17 surface marker 1, FLOT2, ESA1, M17S1

**Target/Specificity**

This FLOT2 antibody is generated from a rabbit immunized with a KLH conjugated synthetic peptide between 322-356 amino acids from human FLOT2.

**Dilution**

WB~~1:2000

E~~Use at an assay dependent concentration.

**Format**

Purified polyclonal antibody supplied in PBS with 0.09% (W/V) sodium azide. This antibody is purified through a protein A column, followed by peptide affinity purification.

**Storage**

Maintain refrigerated at 2-8°C for up to 2 weeks. For long term storage store at -20°C in small aliquots to prevent freeze-thaw cycles.

**Precautions**

FLOT2 Antibody (C-Term) is for research use only and not for use in diagnostic or therapeutic procedures.

**FLOT2 Antibody (C-Term) - Protein Information****Name** FLOT2

## Synonyms ESA1, M17S1

**Function** May act as a scaffolding protein within caveolar membranes, functionally participating in formation of caveolae or caveolae-like vesicles. May be involved in epidermal cell adhesion and epidermal structure and function.

## Cellular Location

Cell membrane; Peripheral membrane protein. Membrane, caveola; Peripheral membrane protein. Endosome Membrane; Lipid-anchor. Note=Membrane- associated protein of caveolae

## Tissue Location

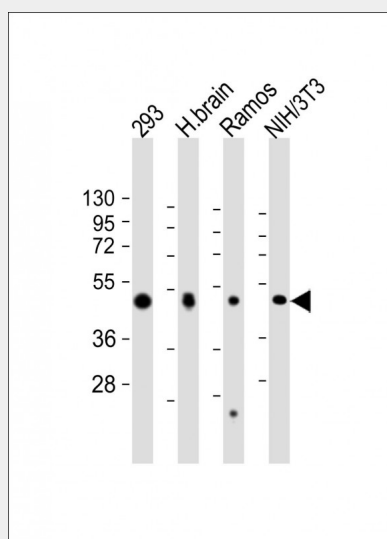
In skin, expressed in epidermis and epidermal appendages but not in dermis. Expressed in all layers of the epidermis except the basal layer. In hair follicles, expressed in the suprabasal layer but not the basal layer. Also expressed in melanoma and carcinoma cell lines, fibroblasts and foreskin melanocytes

## FLOT2 Antibody (C-Term) - Protocols

Provided below are standard protocols that you may find useful for product applications.

- [Western Blot](#)
- [Blocking Peptides](#)
- [Dot Blot](#)
- [Immunohistochemistry](#)
- [Immunofluorescence](#)
- [Immunoprecipitation](#)
- [Flow Cytometry](#)
- [Cell Culture](#)

## FLOT2 Antibody (C-Term) - Images



All lanes : Anti-FLOT2 Antibody (C-Term) at 1:2000 dilution Lane 1: 293 whole cell lysate Lane 2: human brain lysate Lane 3: Ramos whole cell lysate Lane 4: NIH/3T3 whole cell lysate Lysates/proteins at 20 µg per lane. Secondary Goat Anti-Rabbit IgG, (H+L), Peroxidase conjugated at 1/10000 dilution. Predicted band size : 47 kDa Blocking/Dilution buffer: 5% NFDM/TBST.

## FLOT2 Antibody (C-Term) - Background

May act as a scaffolding protein within caveolar membranes, functionally participating in formation of caveolae or caveolae-like vesicles. May be involved in epidermal cell adhesion and epidermal structure and function.

#### **FLOT2 Antibody (C-Term) - References**

Zody M.C.,et al.Nature 440:1045-1049(2006).  
Schroeder W.T.,et al.J. Biol. Chem. 269:19983-19991(1994).  
Kalnine N.,et al.Submitted (MAY-2003) to the EMBL/GenBank/DDBJ databases.  
Gorbea C.,et al.J. Biol. Chem. 285:31616-31633(2010).  
Burkard T.R.,et al.BMC Syst. Biol. 5:17-17(2011).